

# 1<sup>ST</sup> INTERNATIONAL EIMPack CONGRESS

Lisbon , 29-30 NOVEMBER 2012

## Packaging waste management in Portugal the role of the Portuguese Environment Agency – APA.I.P

ISABEL TOMÉ DE ANDRADE



## CONTENTS

### **BRIEF OVERVIEW OF:**

WASTE POLICY AND PACKAGING WASTE POLICY IN PT

LEGISLATION ON PACKAGING WASTE (PW) AT EU AND NATIONAL LEVEL

PT COLLECTIVE MANAGEMENT SYSTEMS FOR PW AND RESPECTIVE QUOTA

### **EUROPEAN STATISTICS ON PW (EEA)**

PW GENERATION PER CAPITA AND COUNTRY

PW RECYCLING IN 2008 AND 2010

PW TREATMENT FROM 1997-2010

GENERATION OF PW AND GDP 1998-2010

### **CONTRIBUTION OF WASTE POLICIES TO A RESOURCE EFFICIENT EUROPE**

SEPARATE COLLECTION

WASTE PREVENTION

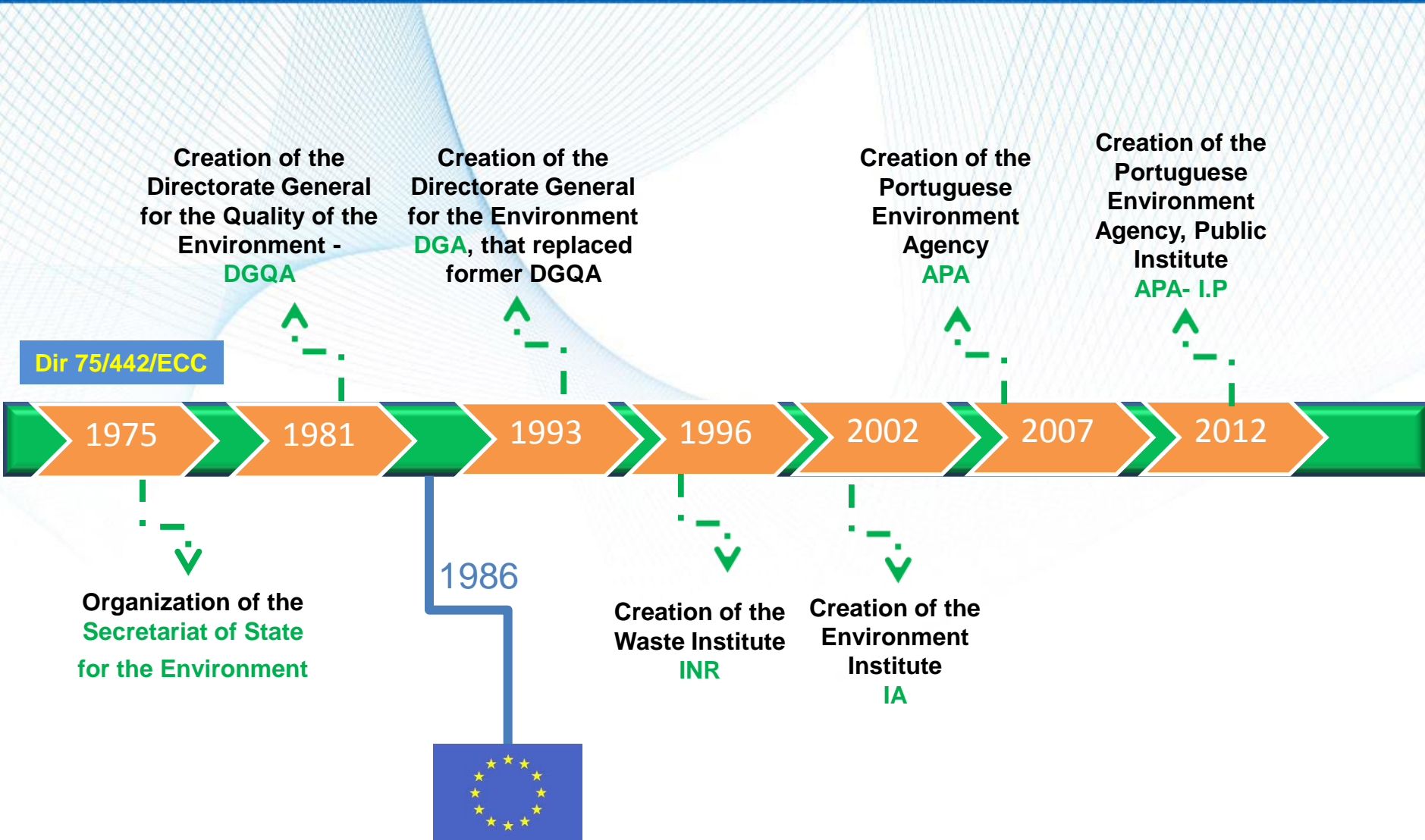
ECONOMIC INCENTIVES FOR MOVING UP IN THE WASTE HIERARQHY

### **REVISION OF PT LEGISLATION ON PW**

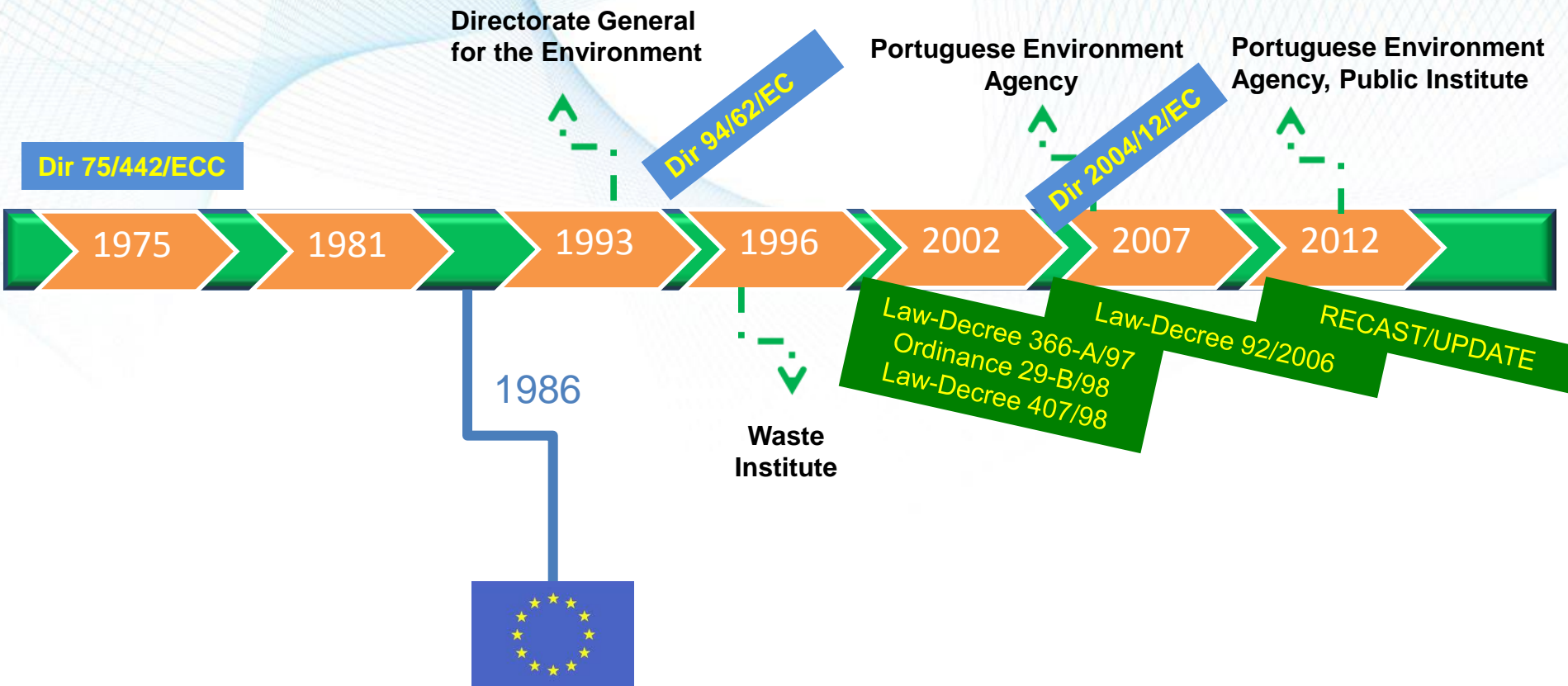
REASONS WHY

WHERE ARE WE

## WASTE POLICY IN PT - BRIEF OVERVIEW



## PACKAGING WASTE POLICY IN PT - BRIEF OVERVIEW



## LEGISLATION ON PACKAGING WASTE AT EU AND NATIONAL LEVEL

**Directive 94/62/EC  
20<sup>th</sup> December**

Law-Decree n<sup>o</sup> 366-A/97 20th December

Law-Decree n<sup>o</sup> 162/00, 27th July

Ordinance n<sup>o</sup> 29-B/98, 15th January

Law-Decree n<sup>o</sup> 407/98, 21st December

Decision  
97/129/EC  
28<sup>th</sup> January

Decision  
97/622/EC  
27<sup>th</sup> May

Decision  
05/270/EC  
22<sup>nd</sup> March

Decision  
09/292/EC  
24<sup>th</sup> May

Decision  
06/340/EC  
8<sup>th</sup> May

Commission  
communication  
2005/C44/13

ID for  
packaging  
materials

Reporting on the  
implementation of the  
packaging Directive  
(3 year, annual)

Heavy metals in packaging:  
➤ Derogation for plastic crates  
and pallets  
➤ Derogation for glass  
packaging

Publication of  
titles and  
references of  
harmonised  
standards

**Directive 2004/12/EC  
11<sup>th</sup> February**

Law-Decree n<sup>o</sup> 92/06, 25<sup>th</sup> May

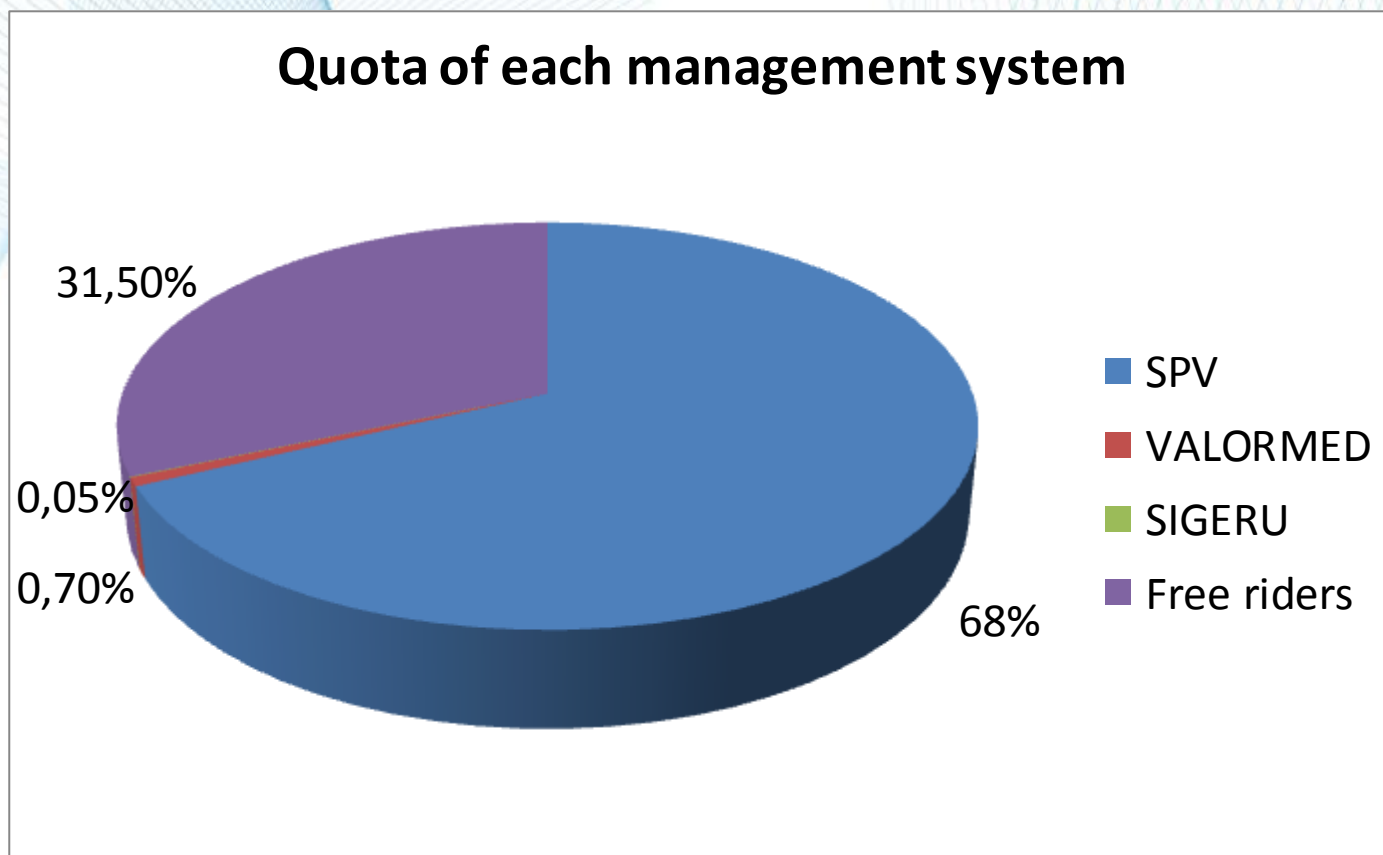
**Directive 2005/20/EC  
9<sup>th</sup> March**

## PACKAGING WASTE: PT COLLECTIVE MANAGEMENT SCHEMES

Management Entities	Permit	Legislation	Targets
<p><b>SPV -Sociedade Ponto Verde</b></p> <p><b>VALORMED</b></p> <p><b>SIGERU</b></p>	<p><b>Until 31.12.2011</b></p> <p><b>Extended until the emission of new permits</b></p>	<p><b>Law Decree no. 366-A/97, of 20.12.1997</b></p> <p><b>Ordinance no. 29-B/98, of 15.01.1998</b></p>	<p><b>Until 31.12.2005:</b> Recovery: 50% by weight of packaging waste (PW) Recycling: 25% PW contribution with <math>\geq 15\%</math> for packaging material (paper / cardboard, plastics, metals and glass)</p>
<p><b>NV -Novo Verde</b></p>	<p><b>Under study</b></p>	<p><b>Law Decree no. 162/2000, of 27.07.2000</b></p> <p><b>Law Decree no. 92/2006, of 25.05.2006</b></p>	<p><b>Until 31.12.2011:</b> Recovery: <math>\geq 60\%</math> by weight of PW Recycling: 55% - 80% PW (with contribution of 60% for PW made of paper / cardboard and glass, 50% for metals, 22.5% for plastic and 15% for wood).</p>

## QUOTA OF EACH PT COLLECTIVE MANAGEMENT SYSTEM FOR PW IN 2010

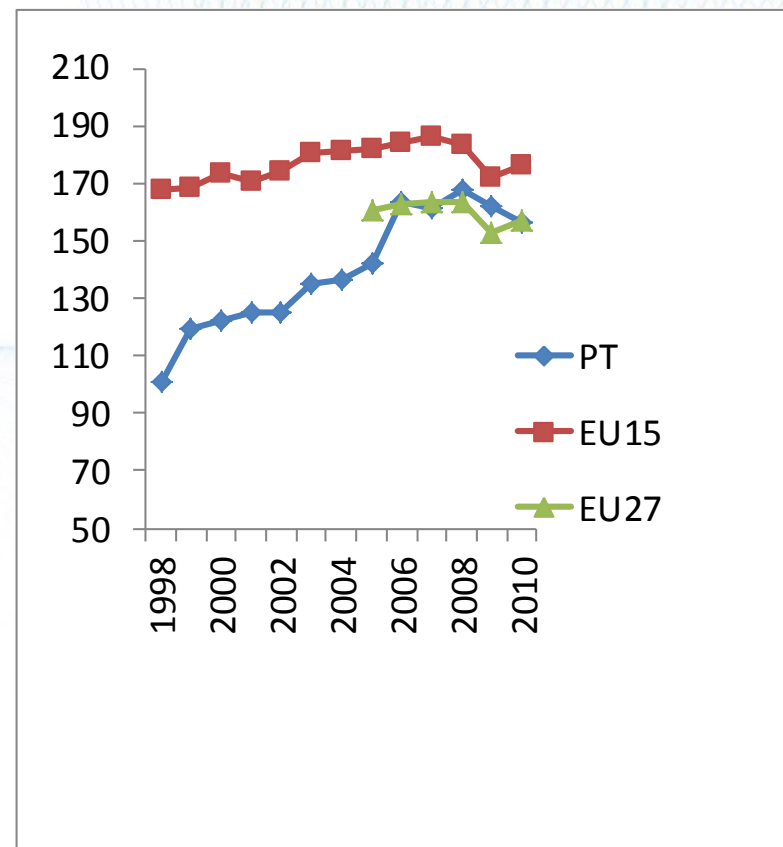
PACKAGING PLACED ON THE PT MARKET IN 2010: 1.664.296 t



# PACKAGING WASTE (PW) DATA – PW GENERATION PER CAPITA AND COUNTRY 1997-2010

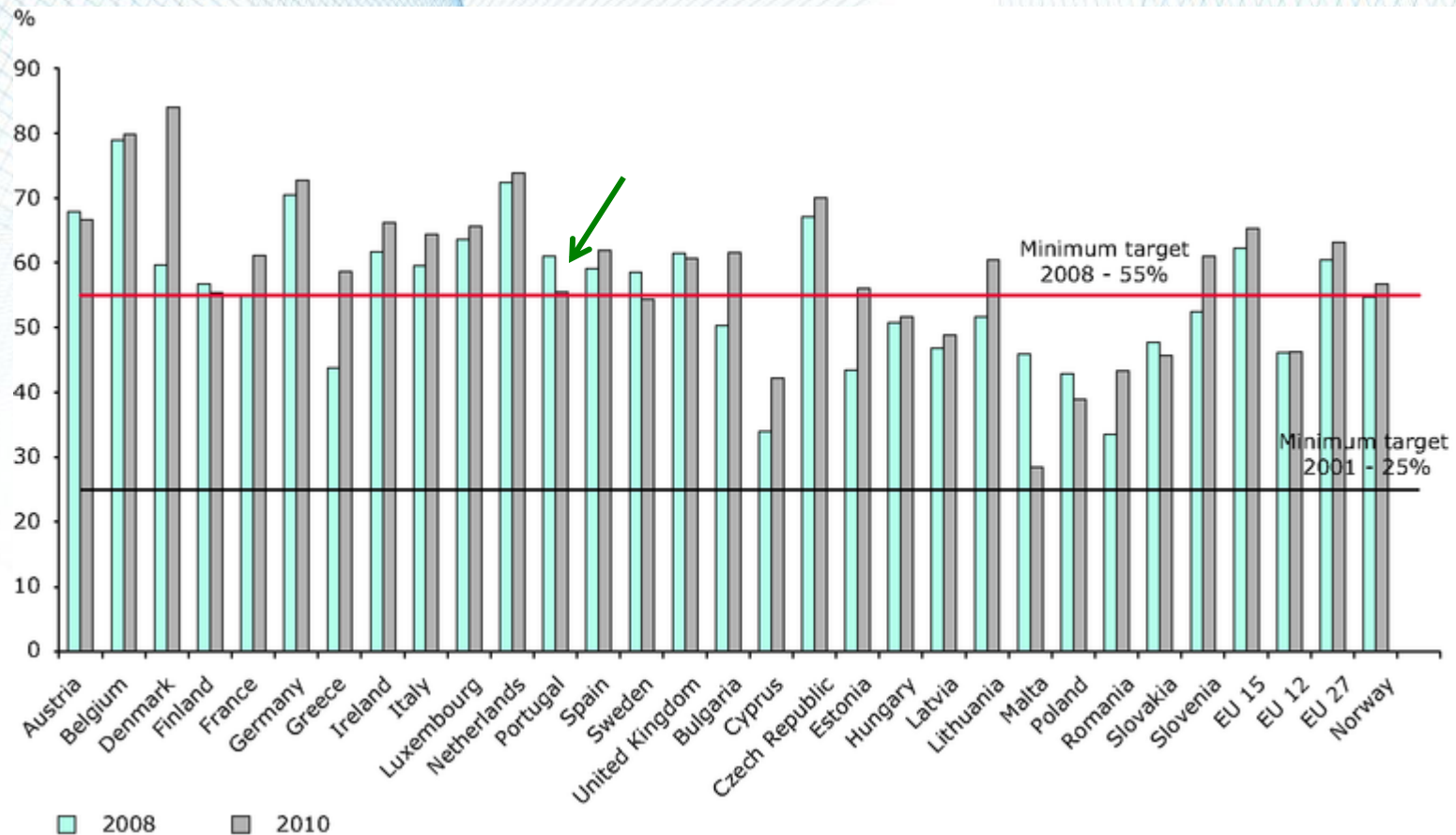
	1997	1998	1999	2000	2001	2002	2003	2004	2005	2006	2007	2008	2009	2010
Austria	138.4	139.8	141.4	146.0	136.4	131.0	142.8	134.8	135.1	141.1	142.7	141.6	139.1	147.0
Belgium	133.2	139.8	144.5	146.0	138.4	144.2	156.5	156.6	158.4	157.9	157.1	157.8	152.1	155.5
Denmark	171.6	158.0	159.0	159.6	161.3	159.4	177.5	175.6	181.4	178.6	179.2	164.2	125.6	125.4
Finland	81.4	82.3	85.7	85.5	88.1	86.8	118.2	124.2	131.3	128.6	131.5	131.9	122.5	132.3
France	185.0	193.9	198.8	205.7	201.6	199.1	198.7	198.0	196.2	199.7	200.5	199.9	190.3	193.5
Germany	167.2	171.7	178.2	183.9	182.4	187.1	187.4	188.0	187.6	195.8	195.9	195.4	183.8	195.6
Greece	66.0	73.4	78.6	85.6	89.0	90.5	92.0	93.8	95.6	94.7	93.8	93.4	89.3	82.0
Ireland	163.9	183.9	187.5	209.0	212.2	216.1	205.1	209.1	222.4	241.4	242.4	232.0	218.1	193.3
Italy	167.5	190.6	195.4	196.1	197.7	198.9	200.3	206.1	203.9	207.3	211.2	203.4	180.5	189.1
Luxembourg	182.4	182.5	182.4	182.7	179.9	190.4	194.3	203.7	212.5	222.3	212.6	213.2	183.3	202.1
Netherlands	175.8	160.8	164.0	182.3	186.0	193.0	209.2	197.4	205.2	168.5	170.0	169.0	153.0	164.3
Portugal	:	101.2	119.1	122.1	124.9	125.2	134.7	136.2	142.0	163.7	161.5	168.0	161.7	156.5
Spain	147.4	159.1	156.3	164.6	146.1	154.3	175.6	174.4	179.7	181.5	187.6	175.7	161.7	160.7
Sweden	104.4	107.9	109.7	110.1	113.6	115.3	158.8	164.5	167.5	156.4	157.7	153.0	152.7	135.1
United Kingdom	171.5	175.1	156.8	155.9	157.6	166.8	168.9	170.9	170.7	172.8	174.0	174.7	174.5	174.5
Bulgaria	:	:	:	:	:	:	:	:	67.2	47.9	41.6	39.6	40.1	42.5
Cyprus	:	:	:	:	:	:	:	196.1	162.4	81.6	99.9	110.3	99.7	:
Czech Republic	:	:	:	:	:	:	70.6	76.0	82.8	87.5	93.2	92.8	85.3	87.8
Estonia	:	:	:	:	:	:	:	97.4	101.9	113.2	120.9	160.0	120.6	117.8
Hungary	:	:	:	:	:	:	:	80.6	84.6	87.9	96.3	100.1	97.6	74.3
Latvia	:	:	:	:	:	:	:	102.3	114.7	134.1	142.0	116.5	82.6	95.1
Lithuania	:	:	:	:	:	:	:	68.1	77.3	83.6	101.4	98.2	78.1	81.8
Malta	:	:	:	:	:	:	:	102.7	104.8	107.2	117.8	119.6	122.1	110.4
Poland	:	:	:	:	:	:	:	89.4	91.9	95.8	82.2	109.7	99.1	112.5
Romania	:	:	:	:	:	:	:	:	52.7	60.7	59.7	54.4	46.5	45.4
Slovakia	:	:	:	:	:	:	76.8	68.8	64.4	55.7	58.9	60.1	73.0	80.4
Slovenia	:	:	:	:	:	:	:	80.9	84.3	101.7	105.1	106.4	101.5	99.5
EU15	161.8	167.8	168.6	173.3	170.8	174.4	180.4	181.2	182.0	184.4	186.1	183.1	172.0	176.0
EU12	:	:	:	:	:	:	:	:	79.4	81.9	78.9	88.2	80.3	83.8
EU27	:	:	:	:	:	:	:	:	160.4	163.0	163.8	163.5	153.1	157.0
Norway	:	:	:	:	:	:	:	:	:	105.0	107.4	148.6	146.0	148.6
Switzerland	:	:	:	174.0	173.0	170.0	172.0	173.0	169.0	209.0	179.0	184.0	176.0	:
Croatia	:	:	:	:	:	:	:	:	:	:	:	50.0	:	:

Kg/inhab.year





## PACKAGING WASTE (PW) DATA – PW RECYCLING IN 2008 AND 2010

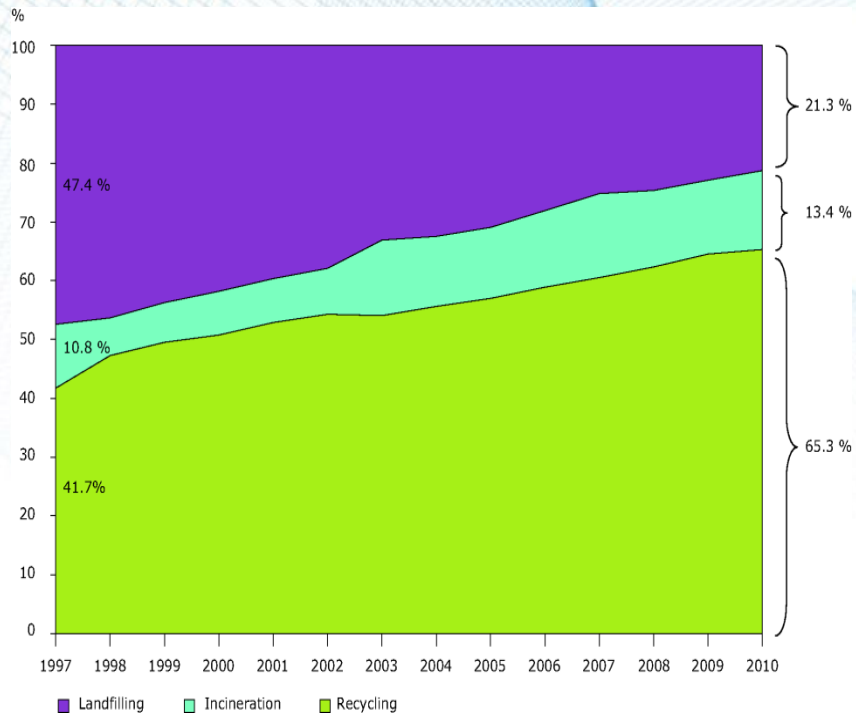


2008 2010

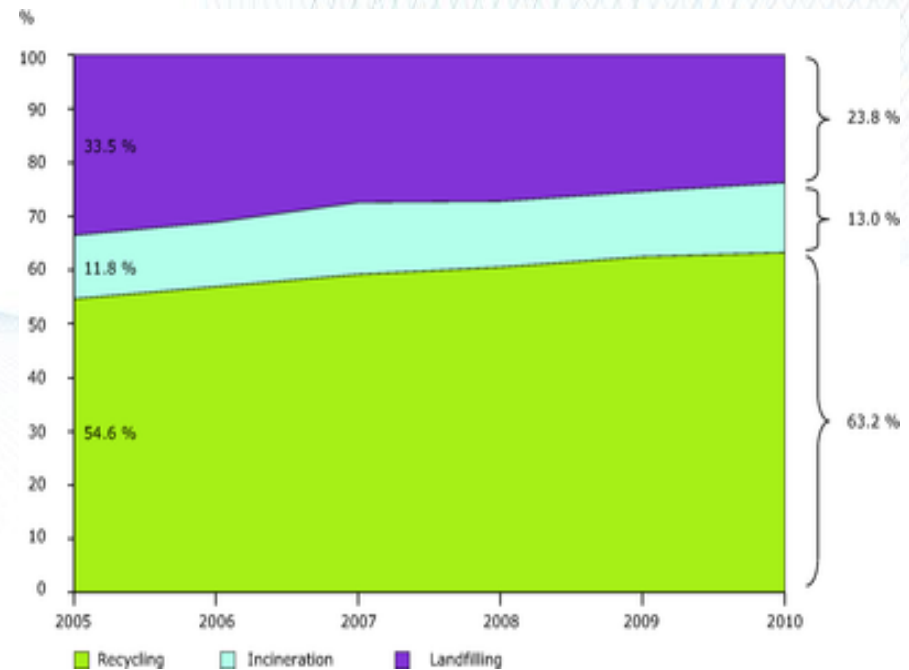
EEA

# PACKAGING WASTE (PW) DATA – PW TREATMENT FROM 1997-2010 IN EU15 AND EU27

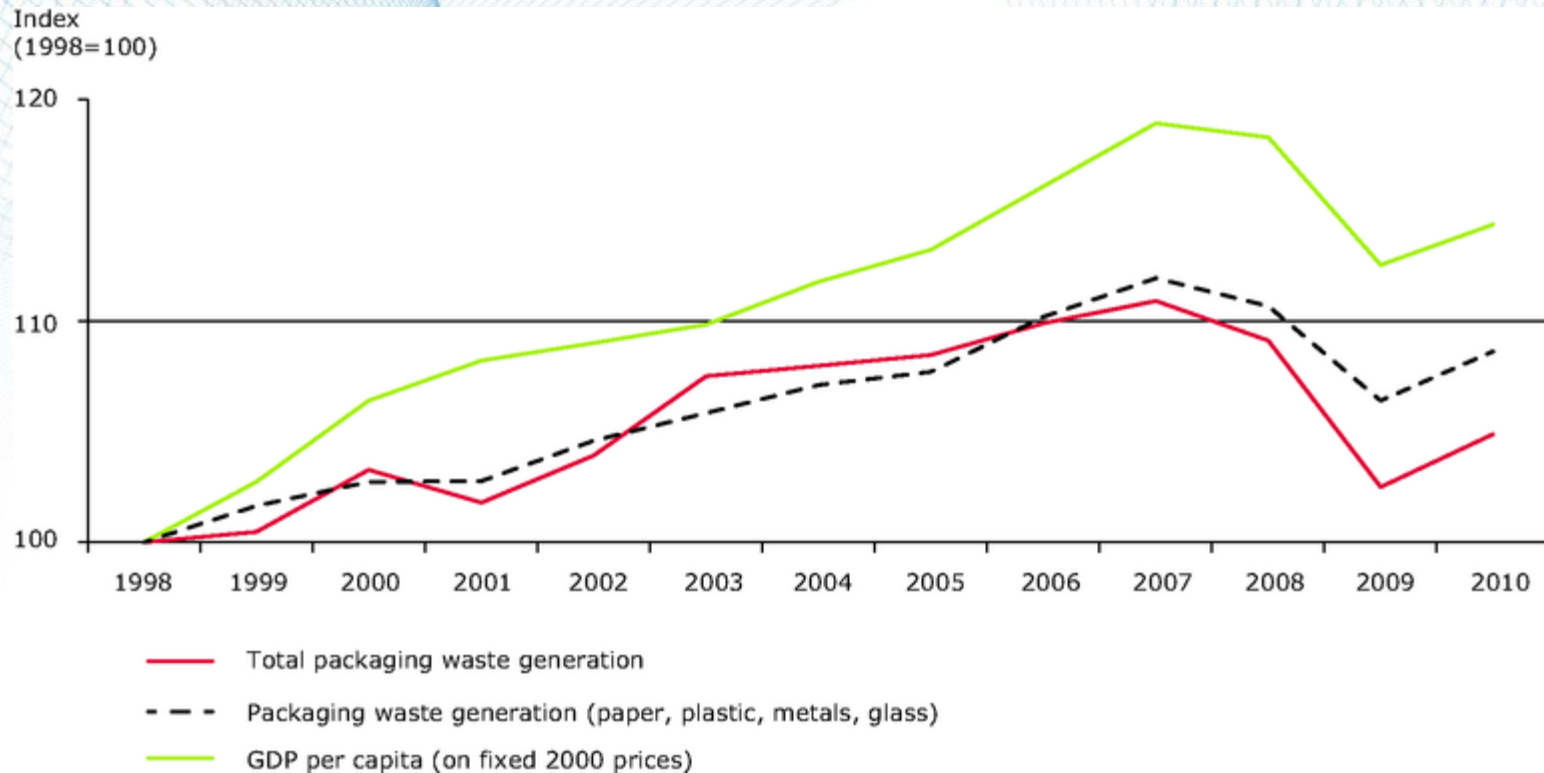
## EU15



## EU27



## PACKAGING WASTE (PW) DATA – GENERATION OF PW AND GDP IN THE EU15 FROM 1998-2010



## Towards a Resource Efficient Europe – CONTRIBUTION OF WASTE POLICIES

SUCCESSFUL MUNICIPAL WASTE MANAGEMENT TO WHICH PW CONTRIBUTES WITH AROUND 17% IN WEIGHT AND 20-30% IN VOLUME, CAN CONTRIBUTE TO A REDUCTION OF GREENHOUSE GAS EMISSIONS, AND PROMOTE ACCESS TO RECOVERED MATERIALS WITH QUALITY

MANY DIFFERENT APPROACHES CAN BE FOLLOWED WHEN “USING WASTE AS A RESOURCE” IS AT STAKE: EPR SYSTEMS, MOVING TOWARDS REPAIR/REUSE PRACTICES, MARKET & ECONOMIC INCENTIVES, OVERCOMING BARRIERS TO RECYCLING.....

IN CASE OF EPR SYSTEMS SOME ISSUES SHOULD BE FURTHER ANALYSED:

- COST EFFICIENCY vs RESOURCE EFFICIENCY
- TREATMENT REQUIREMENTS
- WEIGHT BASED TARGETS
- LINK BETWEEN FEES AND QUALITY OF WASTE MATERIALS

## SEPARATE COLLECTION

### SUCCESSFUL POLICIES

- ❑ IMPORTANT TO COMBINE ADEQUATELY POLICY INSTRUMENTS (LEGAL, ECONOMIC, INFORMATION)
- ❑ DISTANCE TO COLLECTION CONTAINERS IS CRUCIAL
- ❑ BINDING OBLIGATIONS/TARGETS FOR SMAUTS
- ❑ CONTINUOUS AWARENESS ACTIVITIES INVOLVING CITIZENS /CONSUMERS AND MUNICIPALITIES

### LESSONS LEARNT

- ❑ IN SOME COUNTRIES PUBLIC AWARENESS IS SEEN AS MORE IMPORTANT THAN ECONOMIC INSTRUMENTS
- ❑ INCREASE OF RAW MATERIALS PRICES, WILL STIMULATE RECYCLING
- ❑ HIGH POTENCIAL FOR WASTE FROM BUSINESSES SHOULD BE PROMOTED (CIRCULAR ECONOMY)

### CHALLENGES

- ❑ NEED TO RAISE AWARENESS FOR SEPARATE COLLECTION
- ❑ FINDING THE BEST POLICY MIX
- ❑ SEPARATE COLLECTION OF NON URBAN PW
- ❑ HIGH COSTS ASSOCIATED TO THE IMPLEMENTATION OF A WASTE COLLECTION INFRASTRUCTURE
- ❑ DIFFICULTIES WITH CERTAIN PACKAGING MATERIALS (PLASTICS, WOOD...)

# WASTE PREVENTION

## SUCCESSFUL POLICIES

- INVOLVEMENT OF STAKEHOLDERS IN A NETWORK
- ECO-BONUS ON WASTE PREVENTION
- DEPOSIT SCHEMES FOR BOTTLES

## CHALLENGES

- IDENTIFICATION OF EFFECTS AND BENEFITS OF WASTE PREVENTION
- UNCERTAIN OUTCOME
- WIDE RANGE OF EXPERTISE IS NEEDED

# ECONOMIC INCENTIVES FOR MOVING UP IN THE WASTE HIERARCHY

## LESSONS LEARNT

- ❑ TRANSPARENCY IN REPORTING IS IMPORTANT
- ❑ PAY-AS-YOU-THROW SCHEMES LEAD TO SIGNIFICANT WASTE REDUCTIONS
- ❑ LANDFILL TAX CAN TRIGGER INVESTMENTS IN RECOVERY FACILITIES
- ❑ PART OF THE REVENUE FROM LANDFILL TAX SHOULD BE INVESTED INTO ECOLOGICAL ACTIONS

## CHALLENGES

- ❑ LOCAL CONDITIONS INFLUENCE DEPOSIT SCHEMES
- ❑ LANDFILL TAX INCREASES MAY LEAD TO ILLEGAL DUMPING PRACTICES
- ❑ ENERGY RECOVERY IS STILL MORE EXPENSIVE THAN LANDFILLING

## REVISION PROCESS OF THE PT LEGISLATION ON PW – REASONS WHY

SINCE THE 90's SIGNIFICANT CHANGES OCCURED BOTH AT COMMUNITARIAN AND NATIONAL LEVELS

### EU LEVEL

- ❑ REVISION OF THE WFD
- ❑ APPROVAL, BY THE EC, OF SUSTAINABLE PACKAGING STANDARDS MANDATED TO CEN FOR THE COMPLIANCE OF THE ESSENTIAL REQUIREMENTS OF THE PACKAGING DIRECTIVE
- ❑ EVALUATION OF THE 6<sup>TH</sup> EAP ALONG WITH THE STRATEGIES THEREBY FORESEEN, NAMELY THE THEMATIC STRATEGIES FOR THE SUSTAINABLE USE OF NATURAL RESOURCES AND FOR THE PREVENTION AND RECYCLING OF WASTE, THAT WILL SERVE AS AN INPUT TO THE 7<sup>TH</sup> EAP
- ❑ VOLUNTARY INITIATIVES PROMOTING SUSTAINABLE PRODUCTION AND CONSUMPTION PATTERNS AND A LIFE CYCLE APPROACH TO PRODUCTS (ECOLABEL, GREEN PUBLIC PROCUREMENT...)



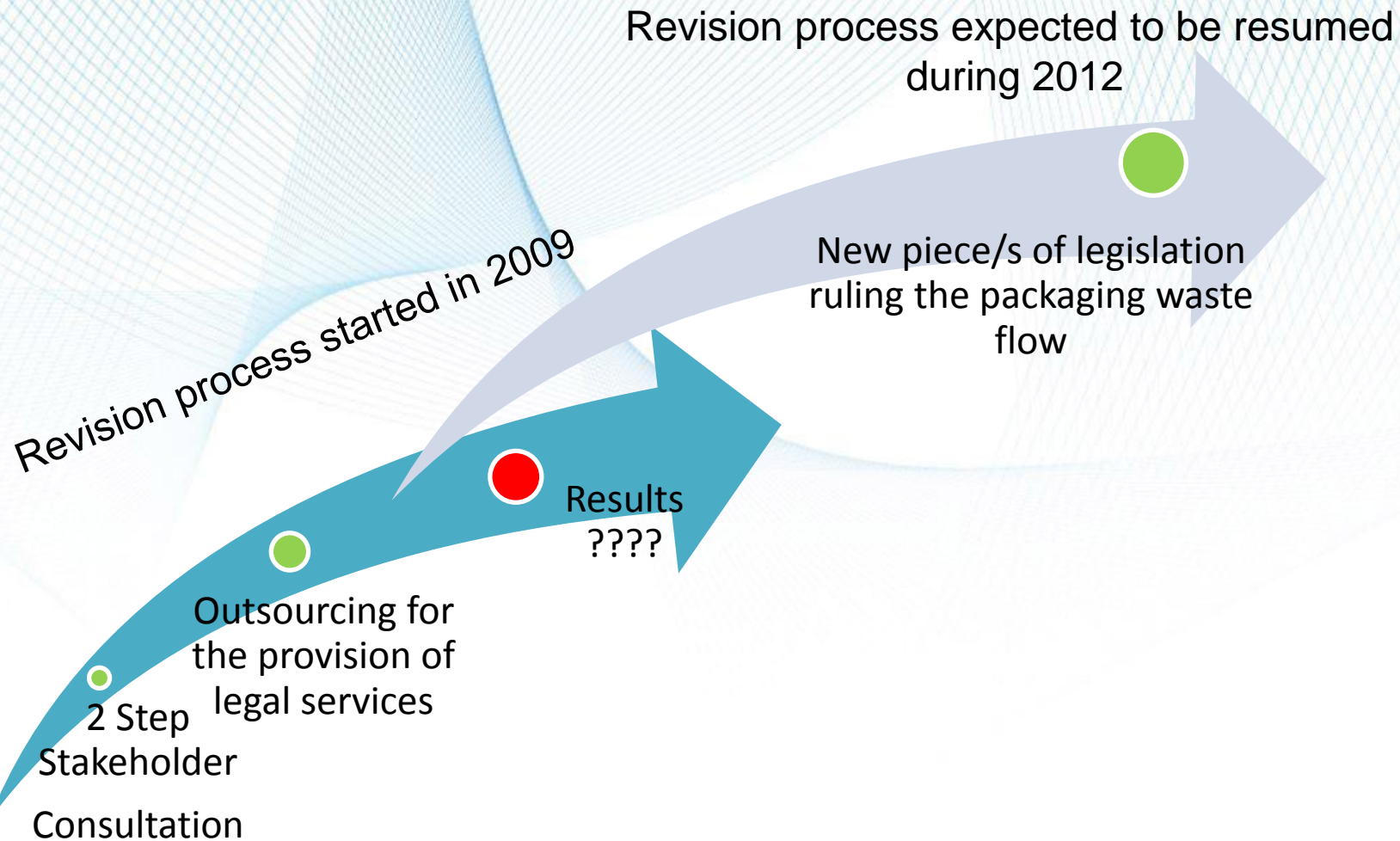
## REVISION PROCESS OF THE PT LEGISLATION ON PW – REASONS WHY

SINCE THE 90's SIGNIFICANT CHANGES  
OCCURED  
BOTH AT COMMUNITARIAN AND NATIONAL  
LEVELS

**PT  
LEVEL**

- TRANSPOSITION OF THE WFD INTO PT LAW – LAW-DECREE 73/2011
- ENTRY INTO FORCE OF IMPORTANT WASTE MANAGEMENT PLANS/PROGRAMMES – PERSU II / PPRU/ PNGR (draft)
- SIMPLIFICATION INTRODUCED BY SIRER/SIRAPA IN THE REPORTING PROCESS
- NEW ADMINISTRATIVE STRUCTURES INTRODUCED IN THE PT MINISTRY DEALING WITH THE ENVIRONMENT AND AS A CONSEQUENCE, WITH WASTE

## REVISION OF THE PT LEGISLATION ON PACKAGING – WHERE ARE WE?



Agência Portuguesa do Ambiente-IP  
Rua da Murgueira 9/9A - Zambujal  
7585 - 2610-124 Amadora  
Tel: + 351 21 472 82 00 / Fax: 351 21 471 90 74  
Email: [geral@apambiente.pt](mailto:geral@apambiente.pt)

THANK YOU FOR YOUR ATTENTION